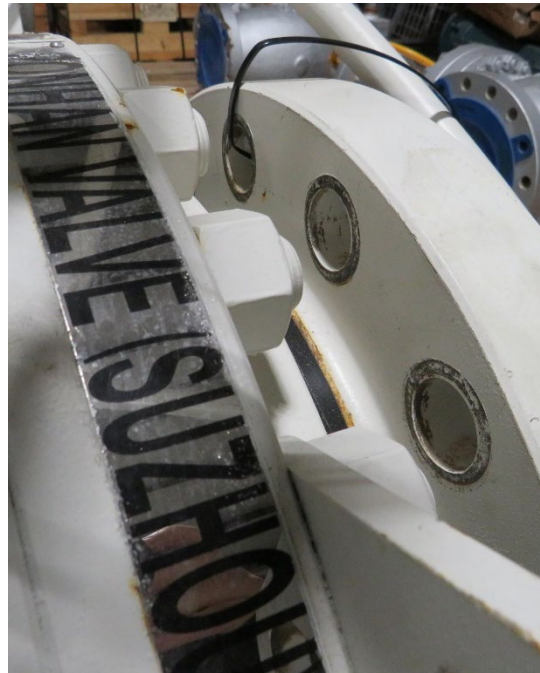




# SLE 25-002 Pipeline Valve Sale



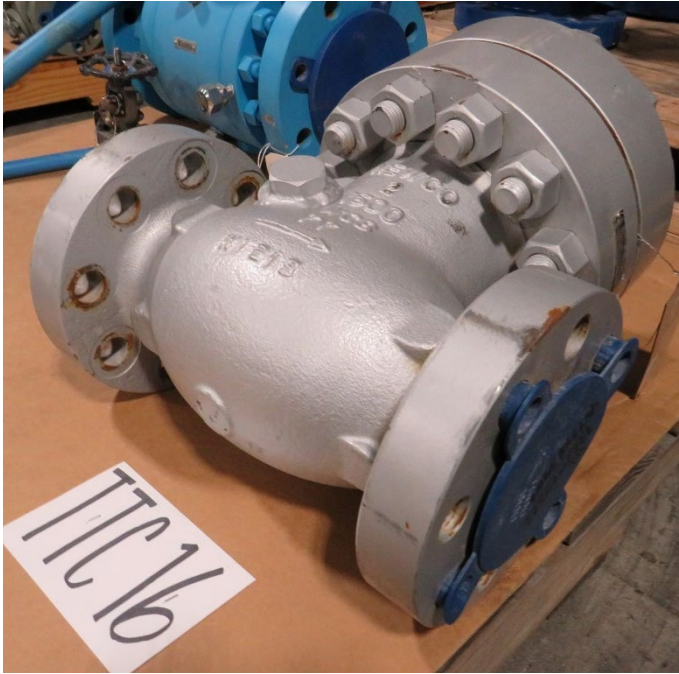


# SLE 25-002 Pipeline Valve Sale



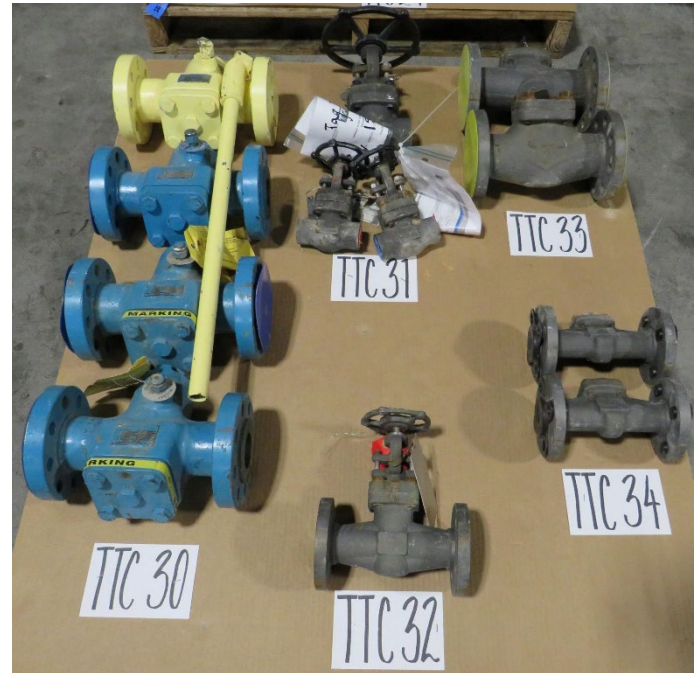
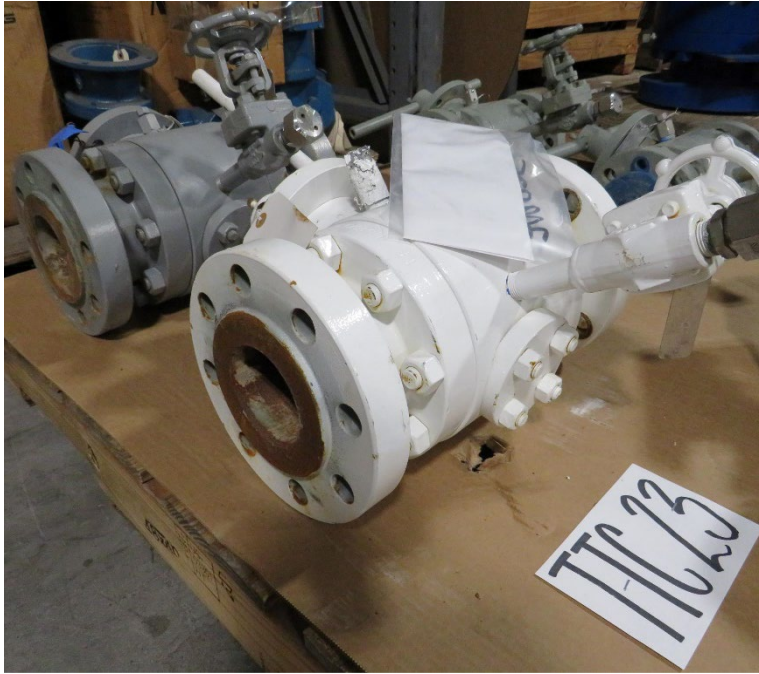


# SLE 25-002 Pipeline Valve Sale





# SLE 25-002 Pipeline Valve Sale



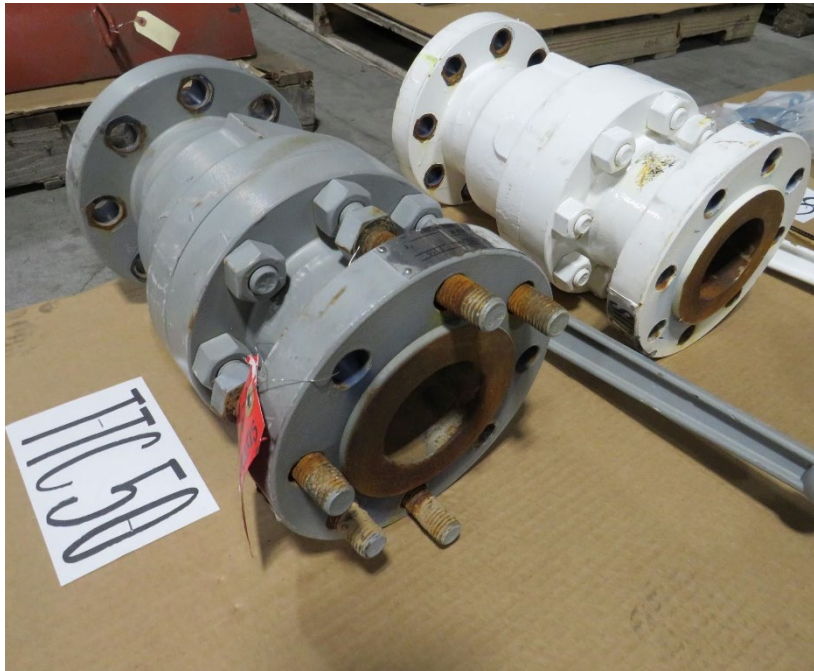


# SLE 25-002 Pipeline Valve Sale



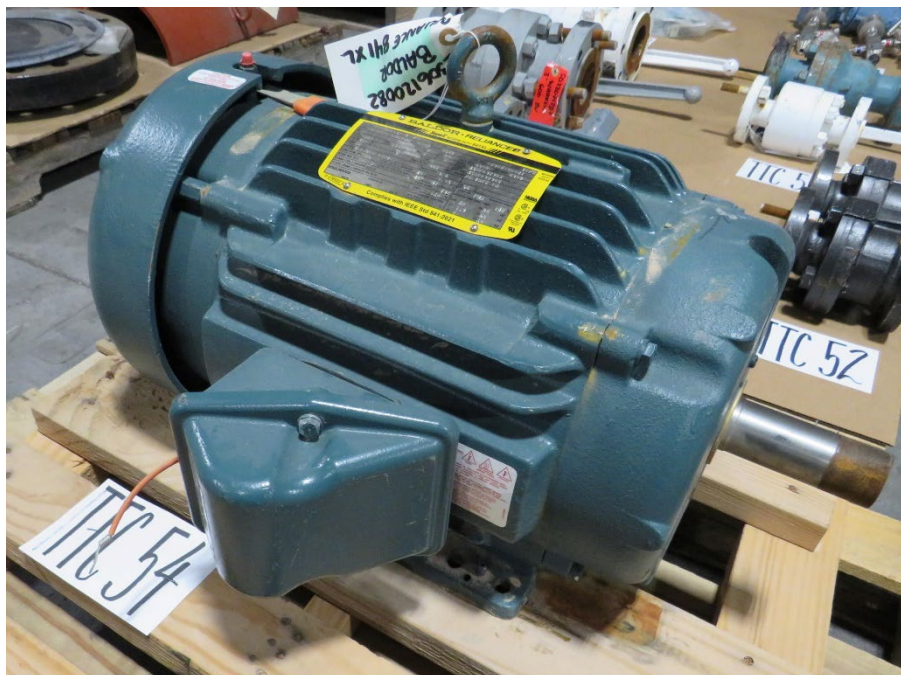


# SLE 25-002 Pipeline Valve Sale





# SLE 25-002 Pipeline Valve Sale



**BALDOR • RELIANCE**  
**SuperE SEVERE DUTY 841XL**  
 MFG. BY ABB MOTORS AND MECHANICAL INC., 5711 R.S. BOREHAM, JR. ST., PORT SMITH AR, 72981, USA

CAT. NO. FFF623341-4	CUST. P/N	ENCL. TFC	MA. DU. IEEE
SPEC 09-0000-0662	CC 010A	FRAME 266T	SER. NO. 72305120032
HP 90	CLASS F	HZ 60	ODE BRG 6309
R.P.M. 1760	MAX R.P.M. 2700	PH-3	DES. 452003X30X
VOLTS 460	CODE B	DES. 452003X30X	452003X30X
AMPS 230	MOTOR WT. 366	LEADS POLYREX EM	POLYREX EM
RATING 400 AMP-CONT	MAX KVAR 3.6		
NEMA NOM. EFF. 93	% NO. OF ROTOR BARS 40	SER. F. 1-15	56
GUAR. MIN. EFF. 91.7	% NO. OF STATOR BARS 40	PF B7	PM
CLASS I DIV. 2 GROUPS A,B,C,D	TEMP CODE TFC		
CLASS I ZONE 2 GROUPS IIA,IIB,IIC	TEMP 160		
SPACE HEATERS	LEADS H1-H2	TIC LVS. NOMIN. MAX. SPACE HEATER TEMP.	
VOLTS	AMPS	MIN. TEMP.	

Complies with IEEE Std 841-2021



# SLE 25-002 Pipeline Valve Sale

